



# MINING: OPEN PITS

Space monitoring is used in multiple ways during geological surveys, when those take place on vast territories with poor accessibility, as well as in the course of widespread mineral deposits opencast mining:

- facilities inventory and production management
- mining operations permission control
- industrial safety assessment based on radar survey, which allows to detect vertical surface displacements
- environmental monitoring with a possibility of economic calculation of direct and collateral damage to nature.

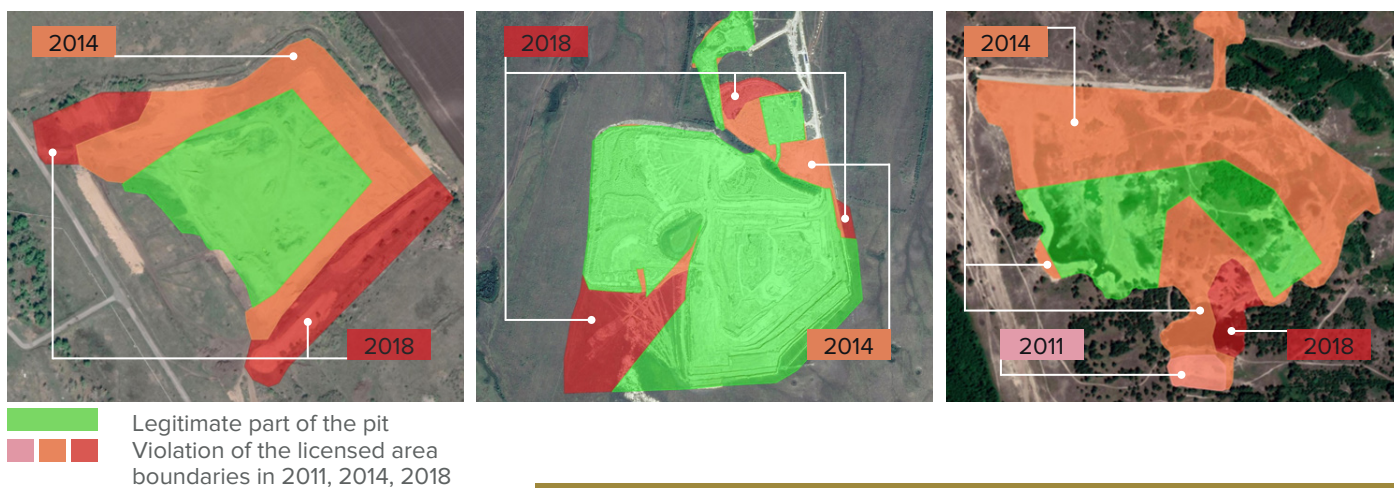






# Extraction

- search for extraction site and its condition monitoring, assessment of transportation accessibility and logistics
- pit inventory: location, quantity, size, condition, extraction volume
- verification of legal validity: availability of licenses for development, compliance with the site boundaries monitoring
- assessment of economic and environmental damage from illegal mining
- monitoring construction waste disposals
- ecological status of territories, pollution reclamation and emergency aftermath monitoring.



## ↕ Surface displacements

Remote sensing radar imagery and LiDAR data can detect displacements and deformations of the earth surface in the area of pits with accuracy up to millimeters.

