



# SOLID WASTE LANDFILLS

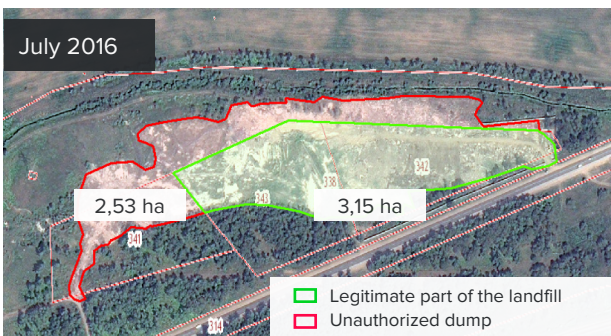
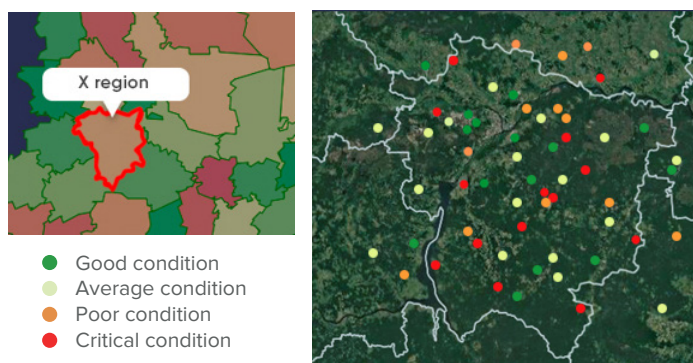
Remote sensing data helps us provide geoinformation solutions aimed at streamlining waste management in the following areas:

- waste storage legitimacy monitoring
- waste disposal and recycling enterprises inventory
- hazardous waste disposal monitoring
- disturbed soils prevention
- littered and polluted area tracking
- elimination and reclamation of waste deposits and polluted areas monitoring.

# Condition analysis

- monitoring authorized and illegal storage sites for solid waste, detection of new deposits
- determining the legitimacy and cadastral violations when allocating landfills and waste deposits
- waste management maps development based on ERS data.

## Rating of solid waste landfills within the area of interest



# Damage assessment

- monitoring works on the elimination and reclamation of waste deposits, disturbed and polluted soils
- assessment of economic and environmental damage incurred
- monitoring the timing, paces and dynamics of construction of waste management infrastructure facilities.

Solid waste landfill and large communal unauthorized dump

**Damage from unlicensed dump\*  
5,1 MLN RUB.**

11.07.2012

S = 0.07 ha



21.09.2014

S = 0.33 ha



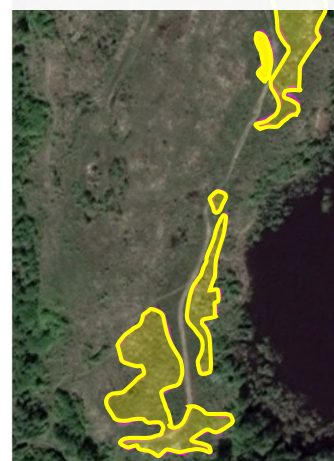
25.10.2016

S = 0.53 ha



21.05.2018

S = 0.98 ha



**ENVIRONMENTAL DAMAGE: 1,2 MLN RUB.**

\* The amount of damage is calculated according to the Methodology approved by the Ministry of natural resources and ecology of the Russian Federation for calculating the amount of damage caused to soils as objects of environmental protection (order No. 238 from July 8, 2010).