



GLOBAL CHANGES

Current technologies of automated satellite imagery processing allow JSC TERRA TECH to create a global information product aimed at rapid detection of changes occurring in the country and worldwide based on massive archive of imagery accumulated in recent decades.

The main function of the service is to provide comprehensive supervision and constant monitoring of various types of economic activity, paces of territorial developments, level of man-made impact in the following areas:

- construction
- mining
- forestry
- agriculture
- road infrastructure
- telecommunications



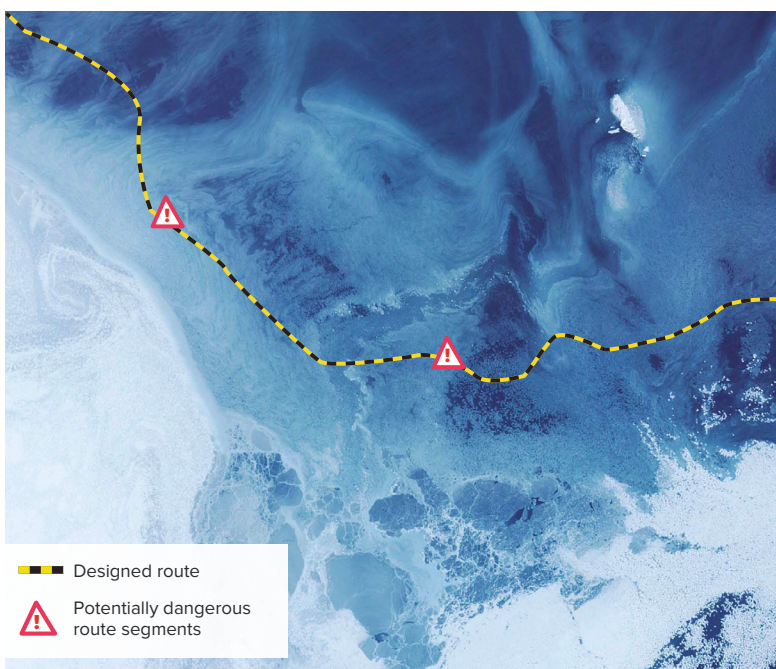
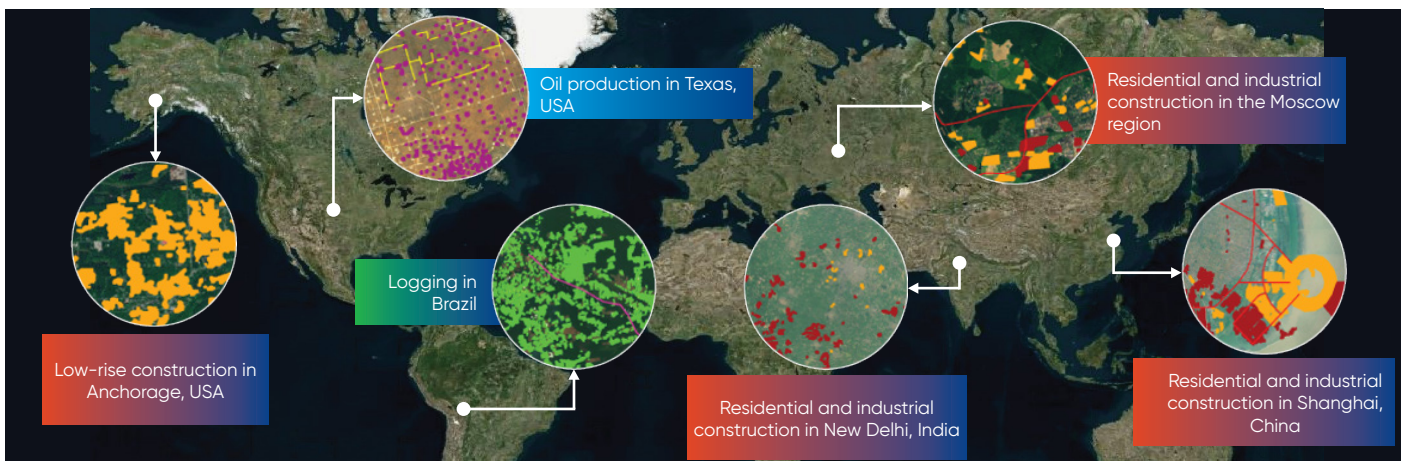
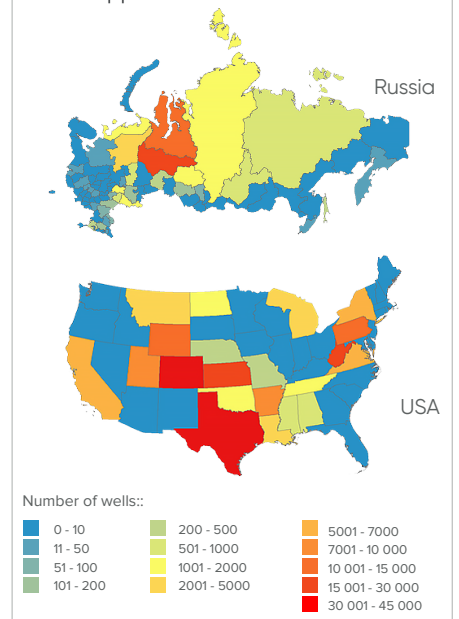
Cross-country comparisons

ERS data serves as a foundation for the assessment of changes on a global scale. Most of critically important sectors, such as fuel and energy, industry, mining, transportation, agriculture and forestry, construction, are well observable from space in retrospect. ERS data and services are used for:

- assessing and forecasting dynamics of a particular economic activity, such as trade, export, import, developments of various infrastructure, on a global, macro-regional and domestic levels. Using the data allows to make environmental assessments on the scale of countries, regions, industries
- awareness of dynamics of various processes developments in other countries of the world ensures independence and security of the country.

Source: data.gov

Comparison of a number of new functional hydrocarbon production wells that appeared from 2000 to 2015



Arctic

Observation of the Arctic region from the space is conducted using optical and radar ERS satellites. Earth remote sensing allows to conduct a wide range of monitoring tasks:

- snow cover
- industrial construction zones, residential and non-residential construction
- mining infrastructure.

Tracking the movement of snow and ice