



ECOLOGY

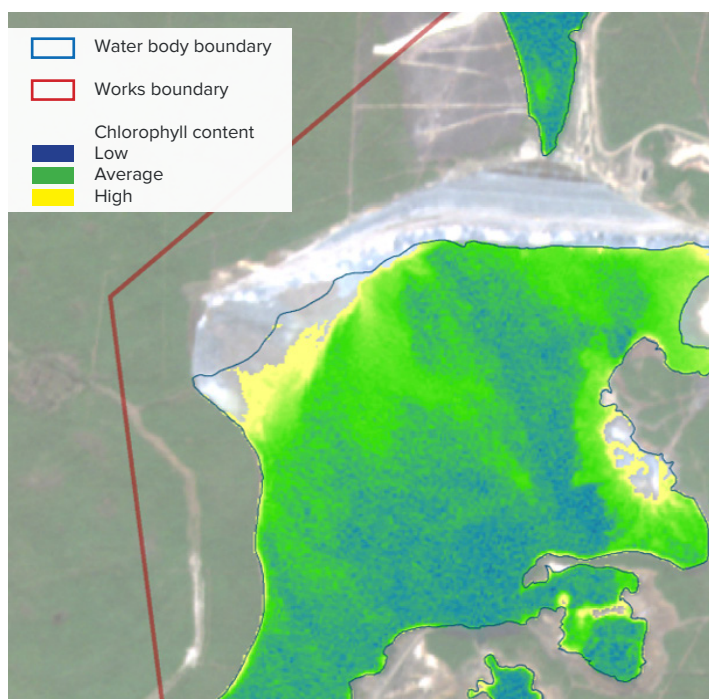
ERS data and digital services are widely used to detect and solve environmental problems and are included in the national «Ecology» project:

- territorial environmental monitoring
- assessment of economic and environmental damage incurred to nature
- environmental damage elimination and land reclamation progression monitoring
- improvement of environmental management systems of companies and organizations
- forecast and analysis of natural and man-made occurrences and events vital for the environment.



Ecological monitoring

- integrated environmental maps of territories, cities and countries
- cartograms of vegetation cover condition
- detection and monitoring of pollution dynamics (mechanical, chemical, thermal, anthropogenic) and adverse exogenous processes (erosion, landslides etc.)



Air and water

- detection of sewage waters diverted to water basins contamination
- tracking emergencies in water basins (accidents, oil spills, wastewaters, others.)
- monitoring elimination of polluting objects and accumulated environmental harm posing a threat to water bodies
- monitoring efficiency of the measures for ecological situation improvement and reservoir purification
- monitoring the timing and paces of construction and reconstruction of treatment and water engineering facilities.

Map chart of chlorophyll content in water



Biodiversity and ecotourism

- monitoring and assessment of protected areas (natural reserves, national parks)
- monitoring unauthorized activities in protected natural areas – logged lands, dumps, construction, unauthorized land acquisition
- mapping lands, monitoring evolution of valuable landscapes (degradation, disappearance)
- development of virtual eco-tourism, environmental education, strengthening environmental and scientific voluntary activities, attracting investors.

