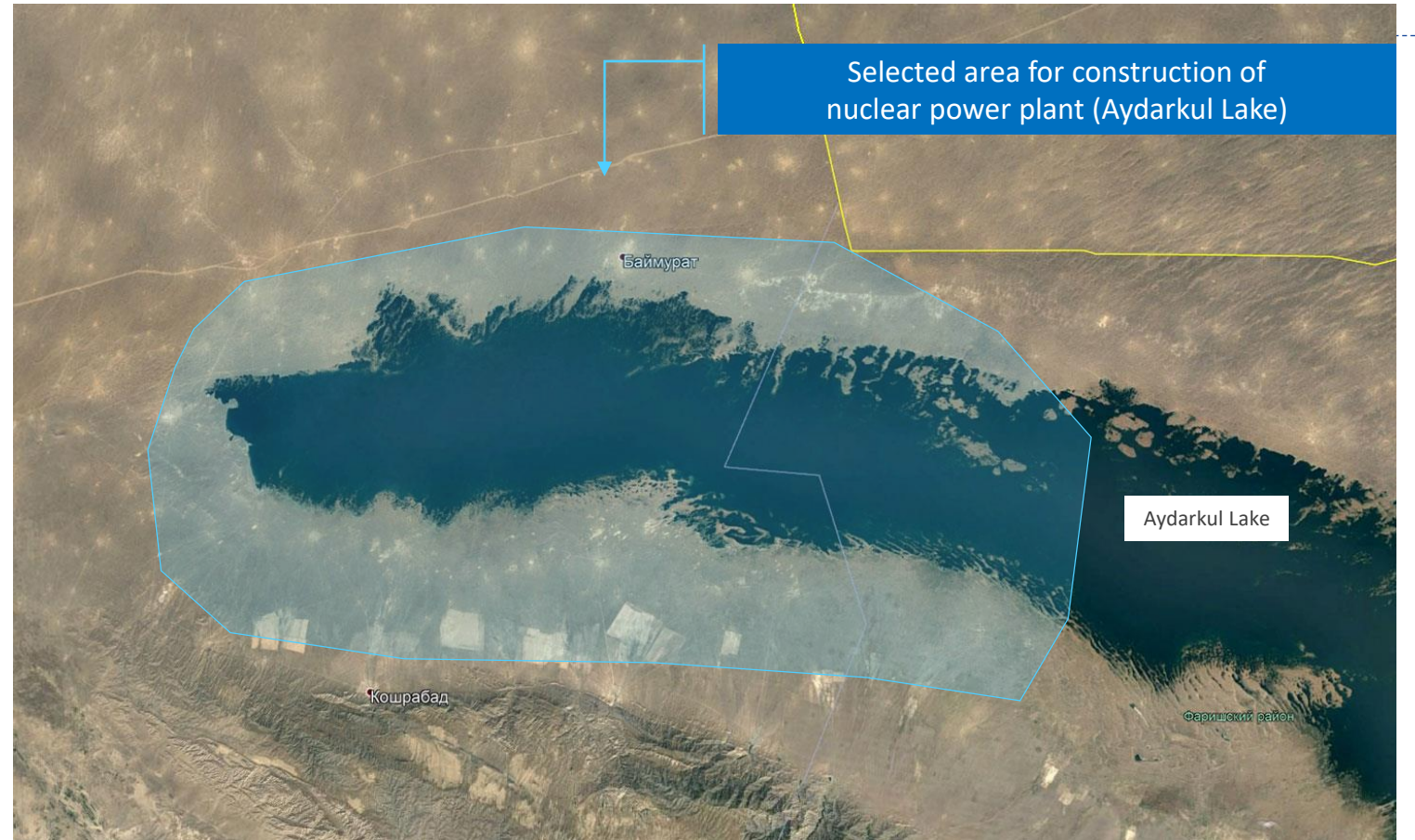


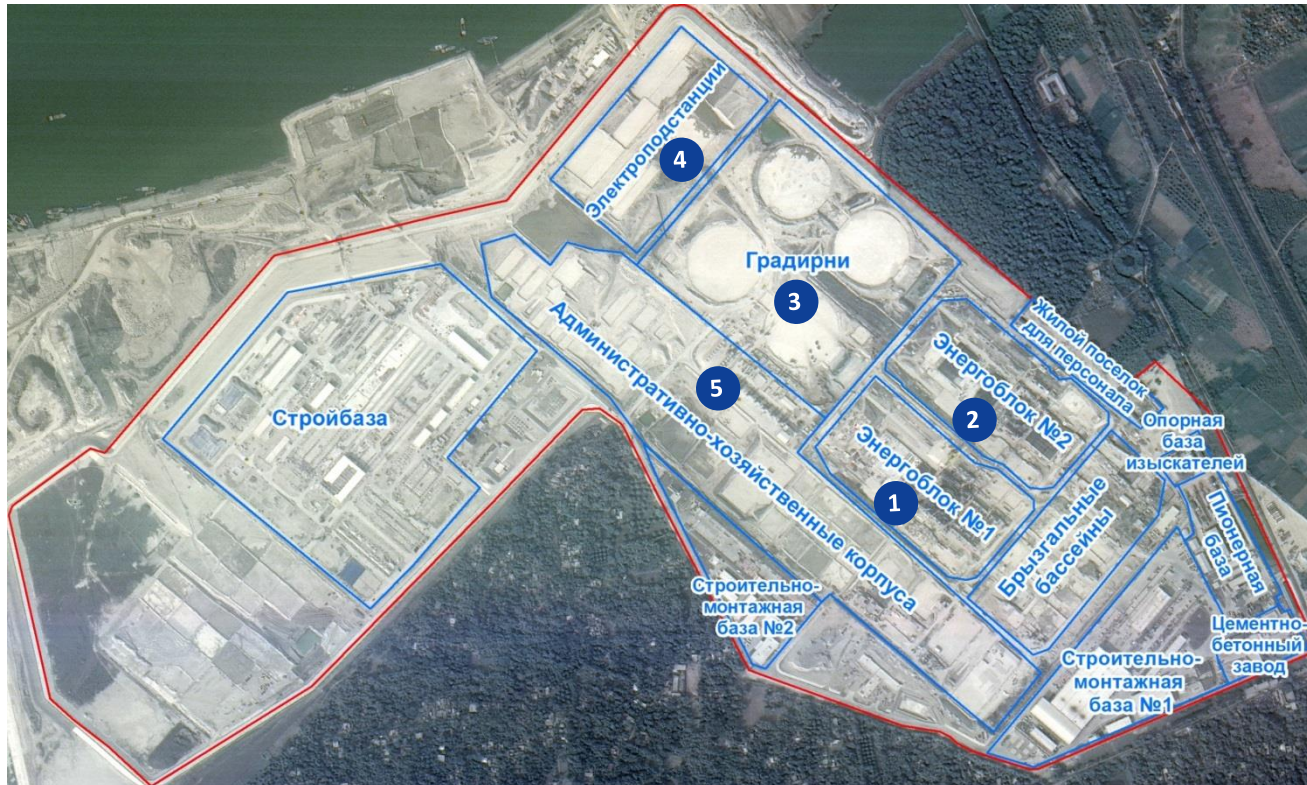
Uzbekistan

Selection Parameters:

- ▶ Low seismicity, no geological risks associated with external processes
- ▶ Availability of water sources
- ▶ Location in relation to electricity consumers
- ▶ Absence of large settlements, regions of agriculture in the immediate vicinity of the projected nuclear power plant



Jan 20, 2019



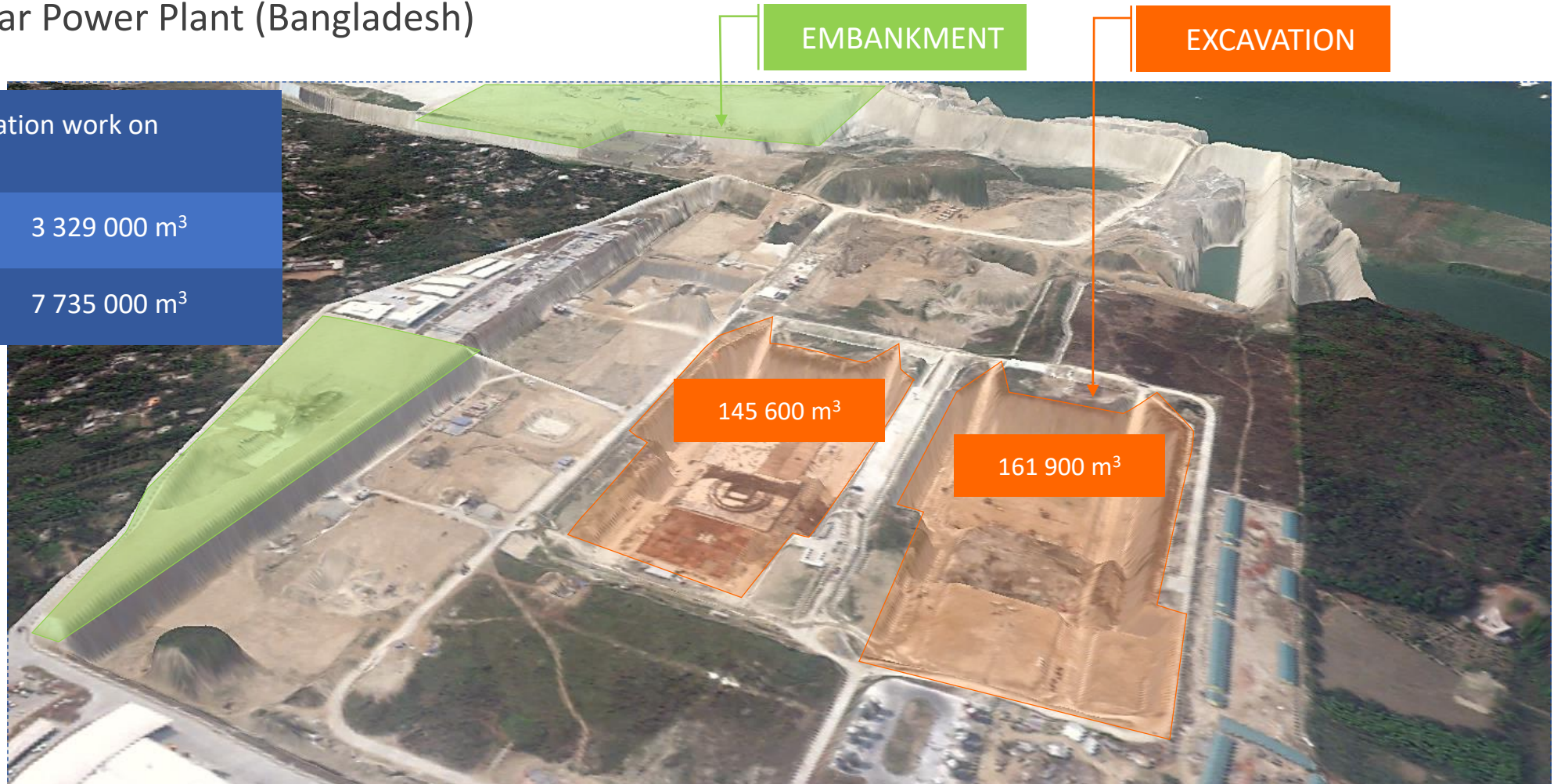
№	Objects for monitoring	Condition	Change area, sq.m	Indicators of construction
1	Energy block №1	Construction is in active phase	22 844	
2	Energy block №2	Construction is in active phase	35 240	
3	Cooling tower	Construction of basement for cooling towers is following up	47 402	12 truck cranes, 11 excavators, 4 bulldozer, 17 trucks
4	Territory of construction of electricity substations	Alignment of sites under the basement	83 956	
5	Administrative buildings	Alignment of sites under the basement	53 585	

“Ruppur” Nuclear Power Plant (Bangladesh)

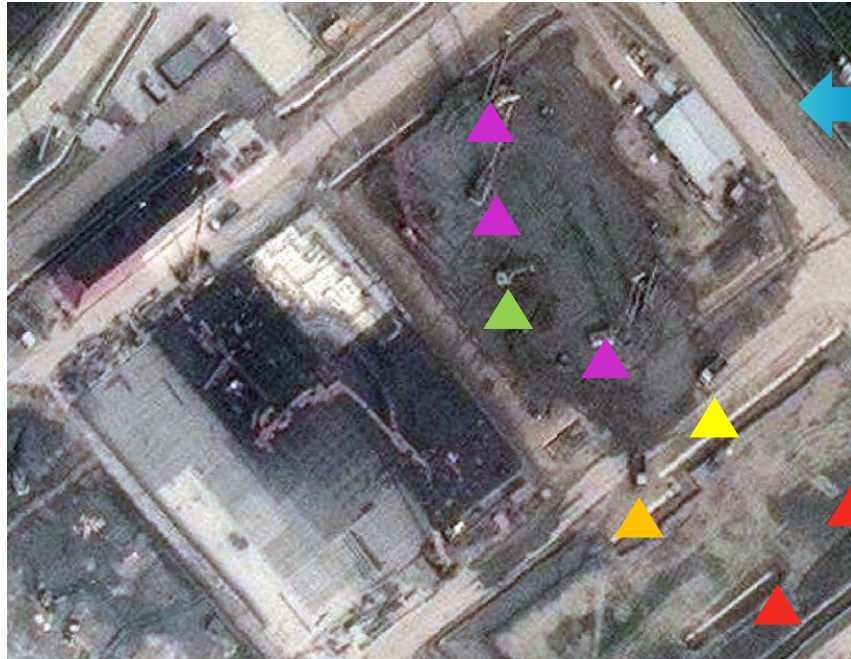
The amount of excavation work on
13.09.2018

EMBANKMENT 3 329 000 m³

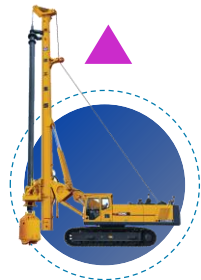
EXCAVATION 7 735 000 m³



Space image



Photo



drilling machine



truck



truck crane



excavator



concrete pump truck

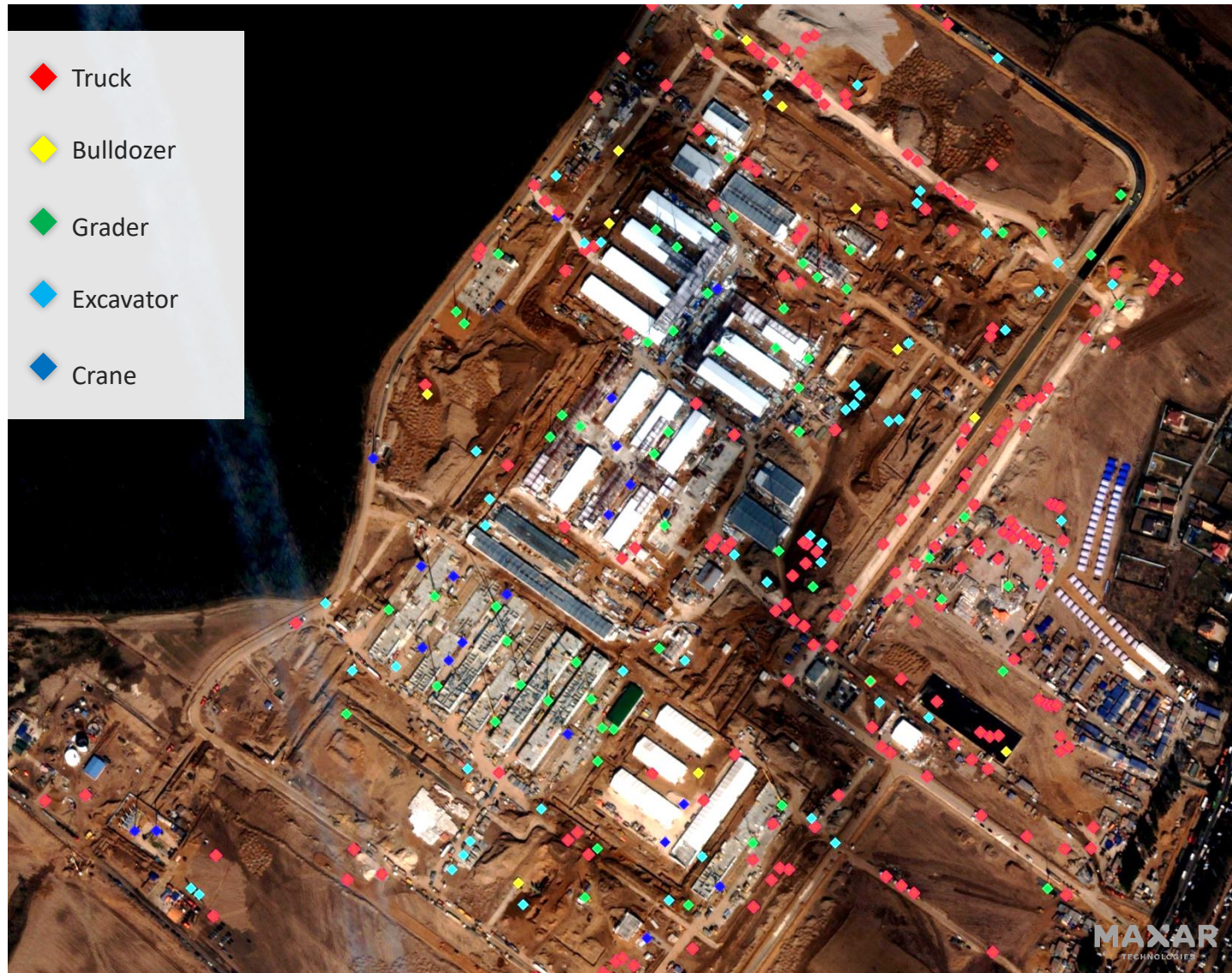
March 28, 2020



- Block A (Treatment block):**
 - A1...A7 - Medical blocks
 - A8 - Pathology unit
 - A9 – the Unit for the waste decontamination
 - A10 - Laboratory unit
 - A11 - Economic block
 - A12 - Washing and sanitation Unit

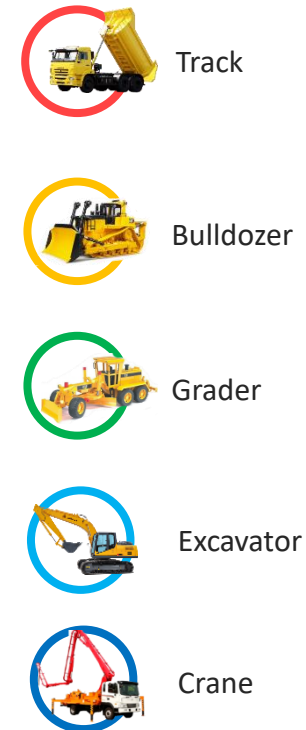
- Block B (Intensive care unit):**
 - B1...B8, B10 - Intensive care Units
 - B9 - Operating unit
 - B9a - Diagnostic unit
 - B11 - Receiving unit
 - B12 - Healthy patient discharge Block
 - B13 - Laundry and storage room for personal belongings
 - B14 - Equipment sterilization Center
 - B15 – Sanitary Inspection
 - B16 - Vehicle washing Unit

- Block C (Service block):**
 - B1...B12, B18 - Dormitories blocks
 - B13 - Administration Block
 - B14, B17 - Warehouse inventory
 - B15 - Medicine warehouse
 - B16 - Food Unit
 - B19 - Control Room

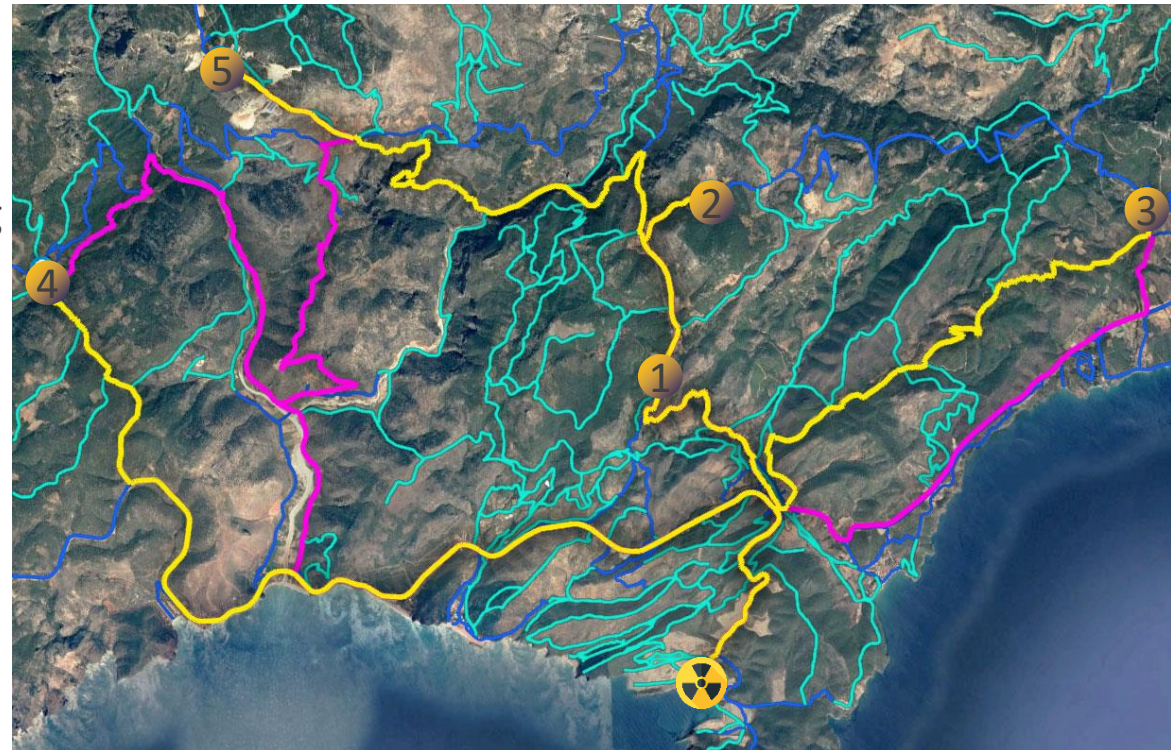


Number of working construction equipment, pcs

March 28, 2020



- Roads existing in 2014
(according to navigation maps)
- Routes of delivery of building materials at NPP
- Roads built from 2014 to 2018
(according to EO data)
- Routes of delivery of building materials at NPP



NPP



Quarries

The shortest distance to NPP, km		
from	According to map	According to EO data
Quarry 1	8,8	8,8
Quarry 2	12,7	12,7
Quarry 3	13,9	12,9
Quarry 4	26,5	14,8
Quarry 5	27,1	21,4

Fuel economy, \$/trip	
Quarry 1	0
Quarry 2	0
Quarry 3	2,44
Quarry 4	28,55
Quarry 5	13,91